

WIKIPEDIA

Family tree of the British royal family

This is the family tree of the British royal family, from James VI and I (who united the crowns of England and Scotland) to the present monarch, Elizabeth II.

Contents

Before James VI/I

Key

House of Stuart

House of Hanover

House of Windsor

See also

Notes

References

Before James VI/I

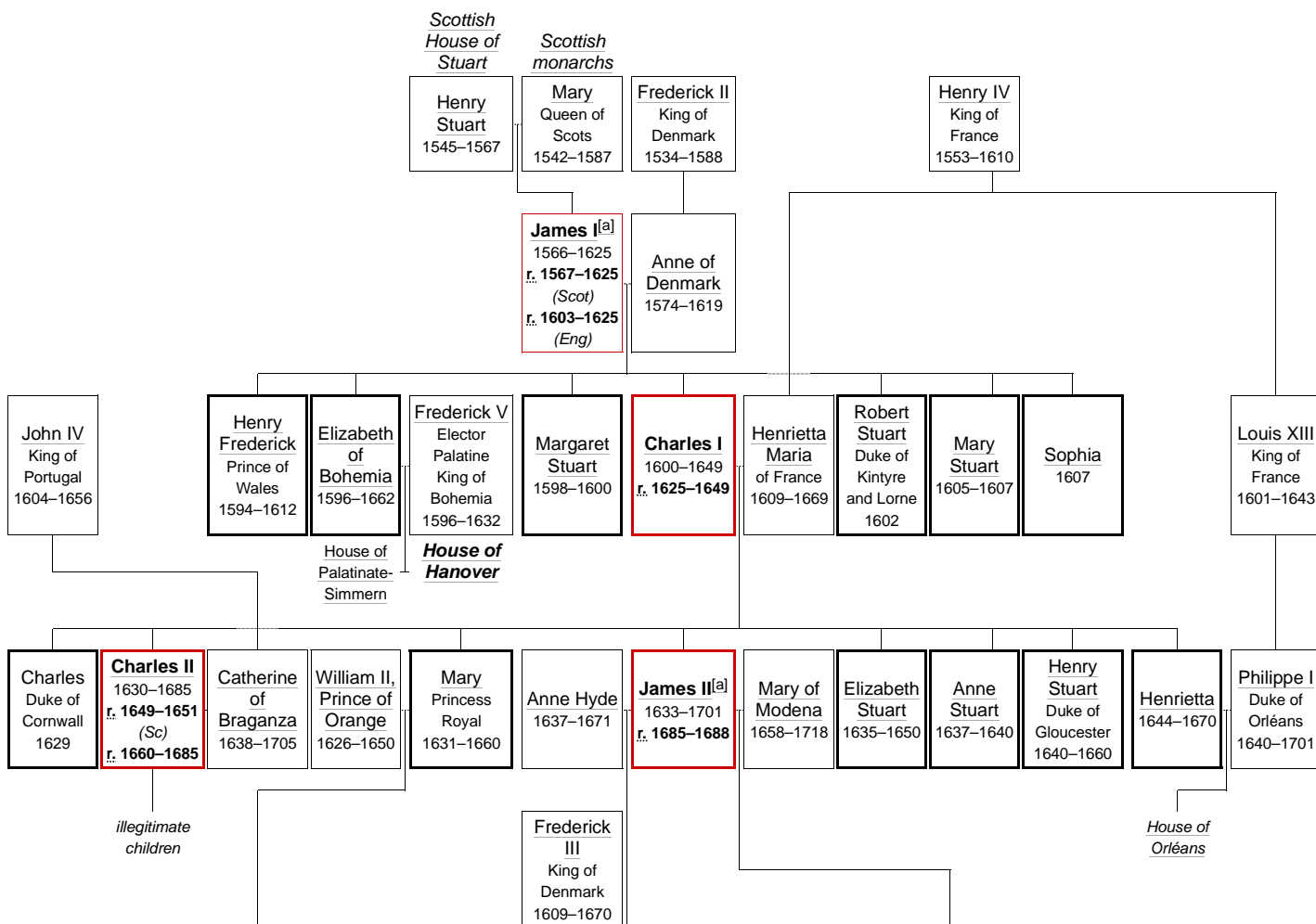
See *Family tree of English monarchs*, *Family tree of Scottish monarchs*, and *Family tree of Welsh monarchs*. This also includes England, Scotland and Wales; all part of the United Kingdom as well as the French Norman invasion.

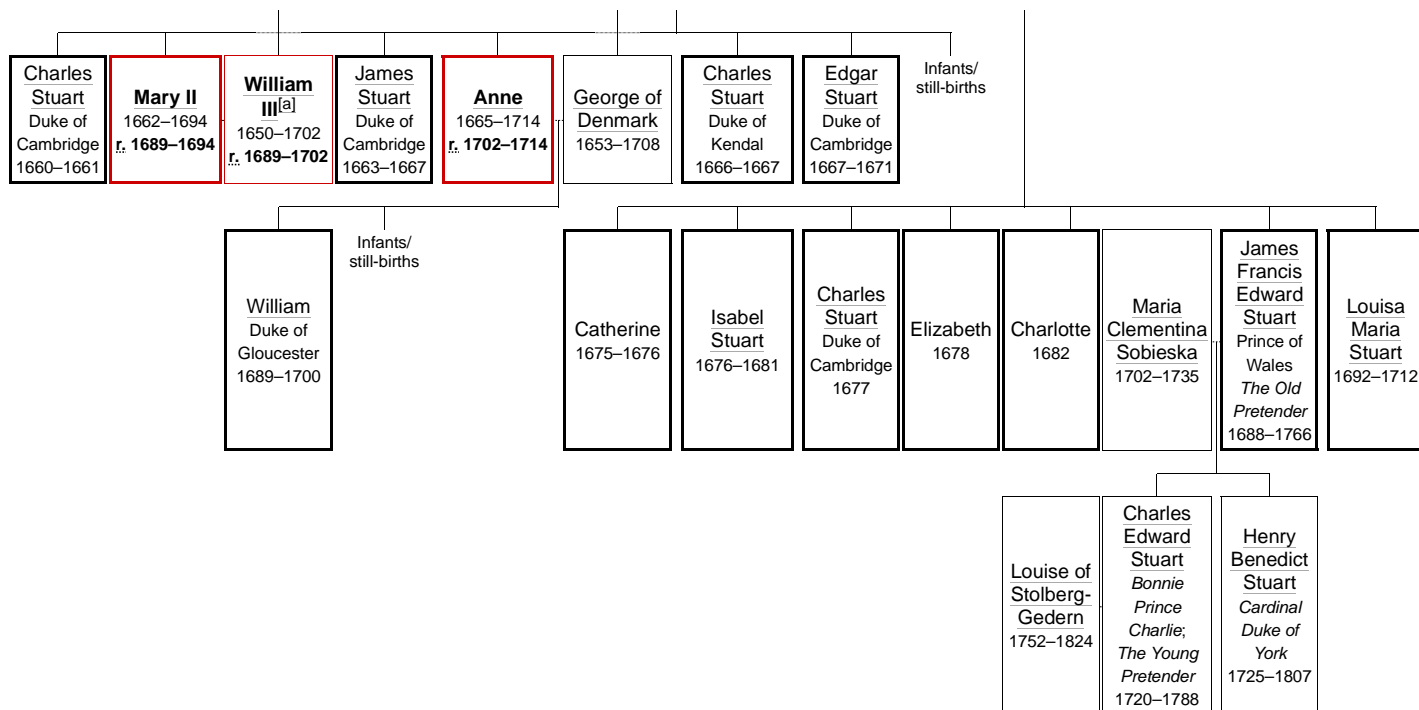
For a simplified view, see: [Family tree of British monarchs](#).

Key

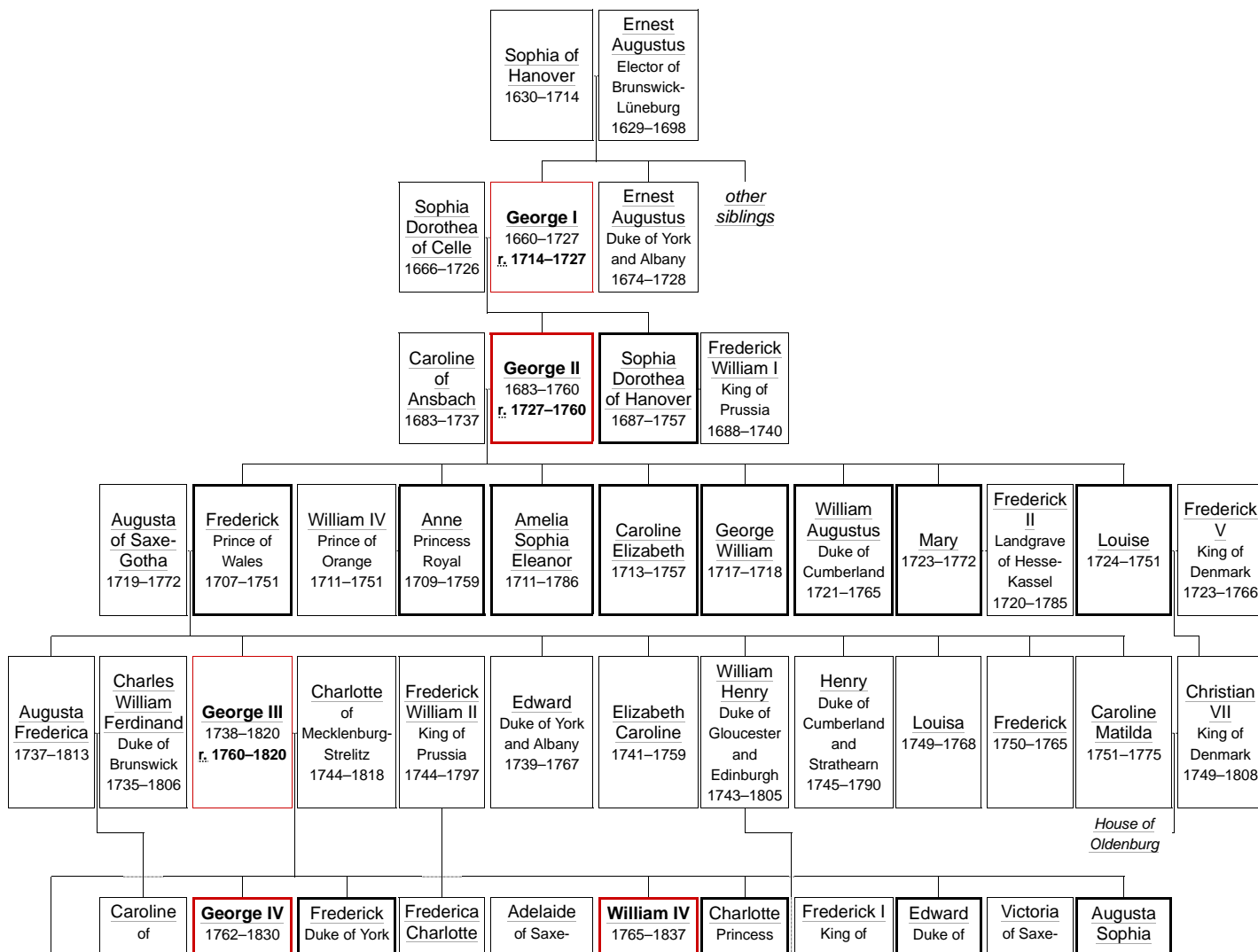
- : Red borders indicate British monarchs
- : Bold borders indicate legitimate children of British monarchs

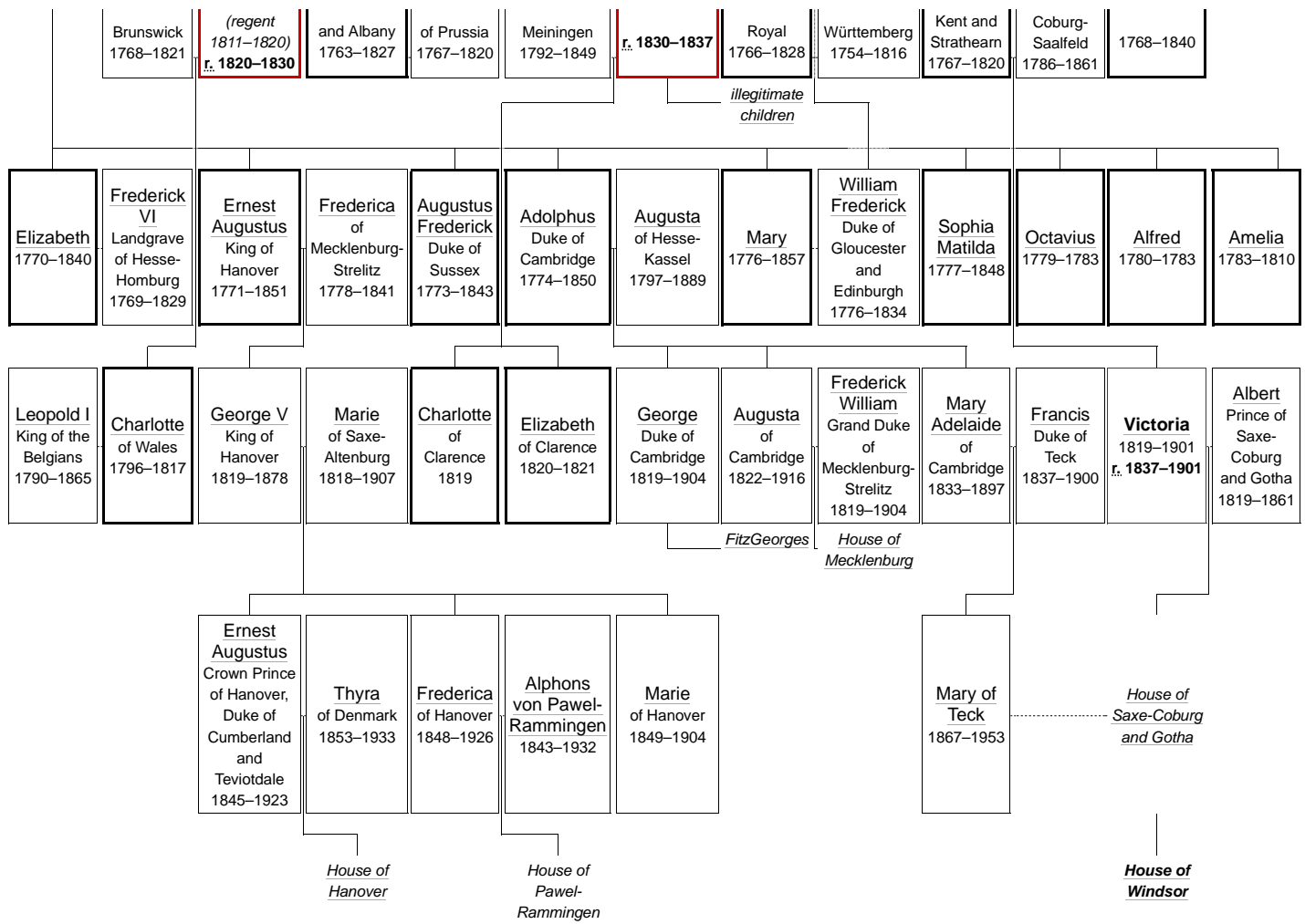
House of Stuart



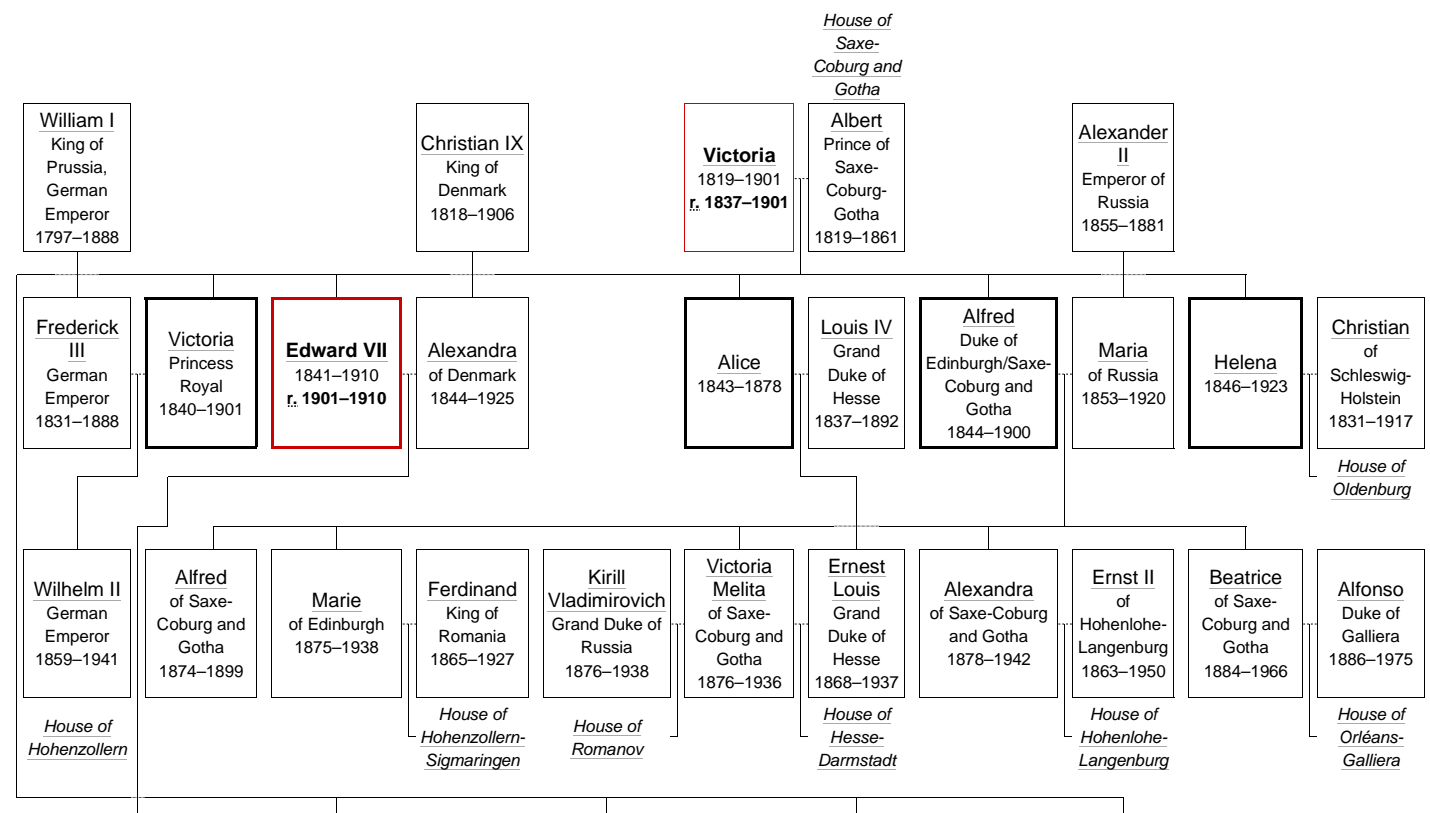


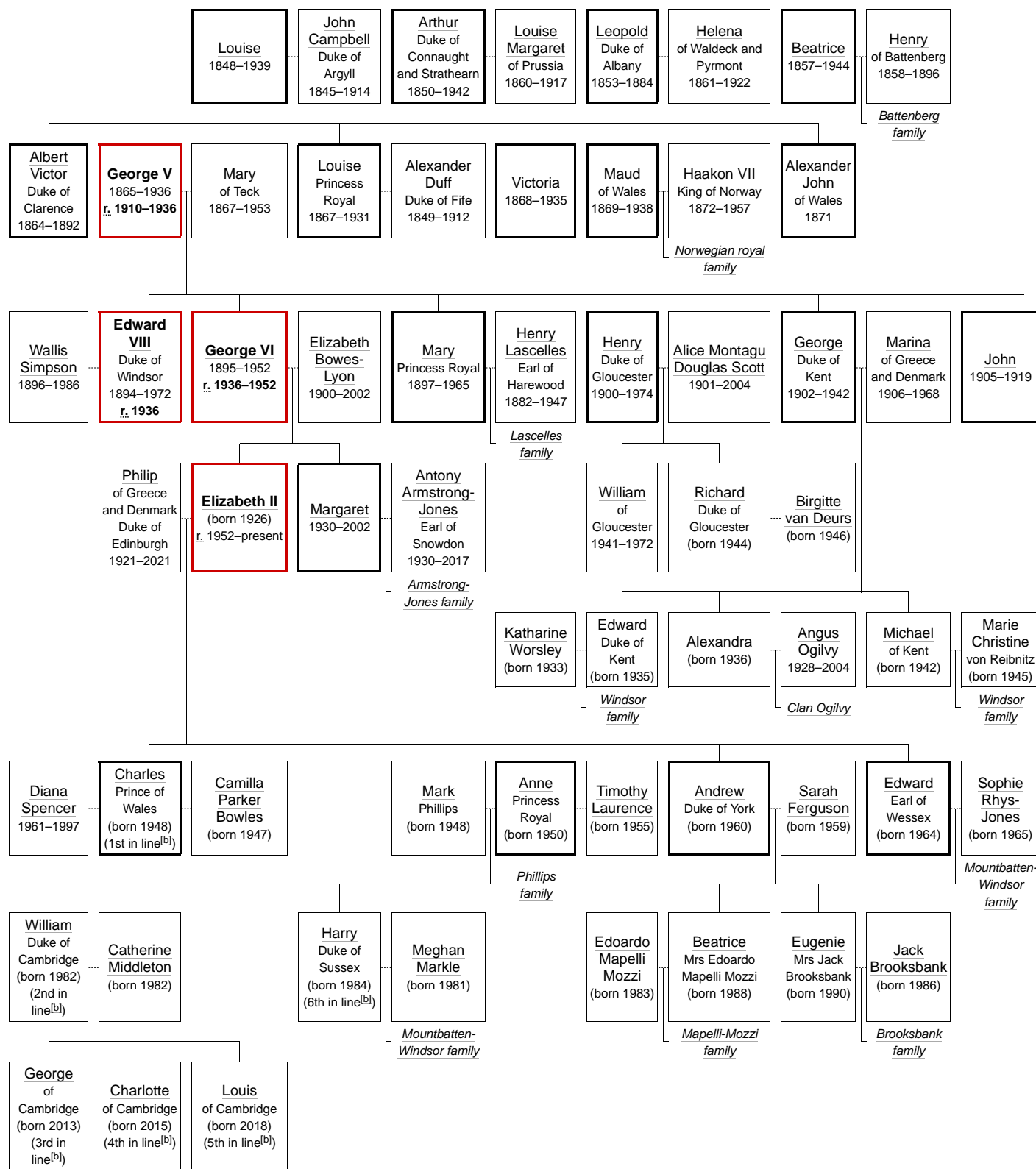
House of Hanover





House of Windsor





See also

- [House of Windsor](#)
- [House of Stuart](#)
- [House of Hanover](#)
- [Family tree of British monarchs](#)
- [Alternative successions of the English crown](#)
- [Line of succession to the British throne](#)
- [Monarchy of the United Kingdom](#)
- [List of English monarchs](#)

Notes

- a. Title as King of England
- b. The six people who are next in the line of succession must obtain the Monarch's consent before marrying.^[1]

References

1. "Succession to the Crown Act 2013, s. 3" (<https://www.legislation.gov.uk/ukpga/2013/20/section/3>). *legislation.gov.uk*.
- "The Tudors (1485–1603) and the Stuarts (1603–1714)" (<http://www.royal.gov.uk/pdf/stuarts.pdf>) (PDF). The official website of the British Monarchy. Retrieved 2010-07-30.
- "The Hanoverians (1714–1837)" (<http://www.royal.gov.uk/pdf/hanover.pdf>) (PDF). The official website of the British Monarchy. Retrieved 2010-07-30.
- "Saxe-Coburg & Gotha (1837–1917) and the Windsors (1917 – Present Day)" (<https://web.archive.org/web/20101202213352/http://www.royal.gov.uk/pdf/Windsor%20family%20tree.pdf>) (PDF). The official website of the British Monarchy. Archived from the original (<http://www.royal.gov.uk/pdf/Windsor%20family%20tree.pdf>) (PDF) on 2010-12-02. Retrieved 2010-07-30.

Retrieved from "https://en.wikipedia.org/w/index.php?title=Family_tree_of_the_British_royal_family&oldid=1090042357"

This page was last edited on 27 May 2022, at 01:18 (UTC).

Text is available under the Creative Commons Attribution-ShareAlike License 3.0; additional terms may apply. By using this site, you agree to the Terms of Use and Privacy Policy. Wikipedia® is a registered trademark of the Wikimedia Foundation, Inc., a non-profit organization.